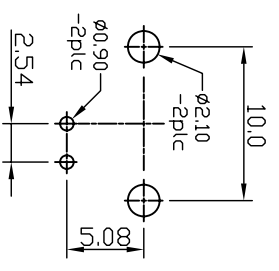
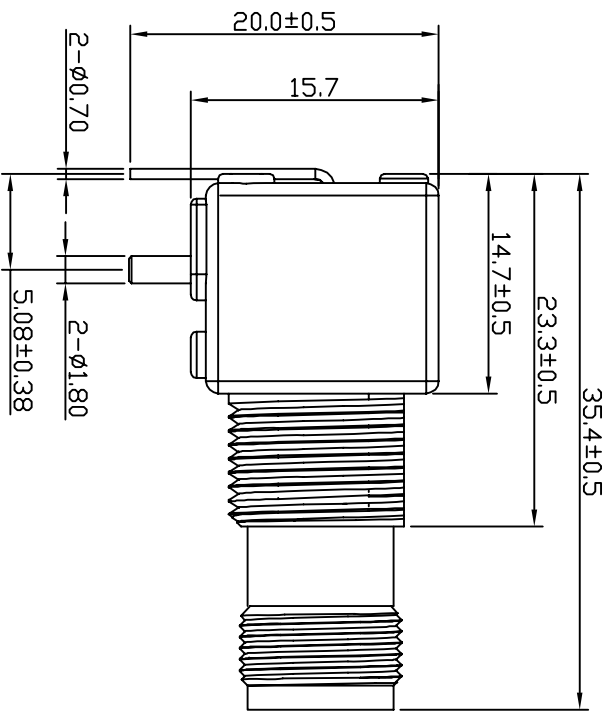
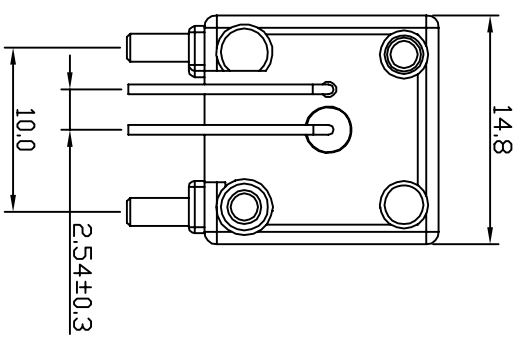


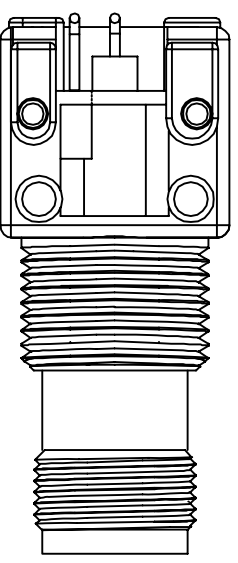
1. MATERIAL
  - 1.1 PIN HOUSING:ABS.
  - 1.2 BODY: ZINC.
  - 1.3 CENTER PIN:BRASS.
  - 1.4 WASHER:SPCC.
  - 1.5 NUT:BRASS.
2. FINISH
  - 2.1 CENTER PIN:GOLD FLASH PLATED
  - 2.2 LINE PIN:TIN PLATED.
  - 2.3 BODY:NI PLATING
  - 2.4 MOUNT POST:TIN PLATING
  - 2.5 WASHER AND NUT:NI PLATED?

- 3.ELECTRICAL CHARACTERISTICS
  - 3.1 WORKING VOLTAGE: AC 500V.
  - 3.2 WITHSTAND VOLTAGE:1000V,50Hz,rms.
  - 3.3 INSULATION RESISTANCE: 1,000M OHM MIN.
  - 3.4 IMPEDENCE:50 OHM.

- 4.ENVIRONMENTAL
  - 4.1 WORKING TEMPERATURE: -55°C~+155°C.
  - 4.2 RELATIVE HUMIDITY:MAX 95%(40°C±2°C)



RECOMMEND PCB LAYOUT



AUTHORITY		SIGNATURE		DATE		DESCRIPTION		TNC JACK RA DIP CONN.	
DWN.		LILY		2007/09/18		P/ND.		XLT-TNC50-KL-02	
CHK.		JOB		2007/09/18		TOLERANCE UNLESS OTHERWISE SPECIFIED		LINEAR	
APV/D.		KEYVIN		2007/09/18		UNIT: mm		X±0.30 .XX±0.20 .XXX±0.10	
DWG KIND:		CUSTOMER		REV.		A 0		SCALE	
								1:1	
								SHEET	
								1 OF 1	